



GAT MONTHLY MEMBERSHIP PROGRESS REPORT

Results as of: 4/30/2023

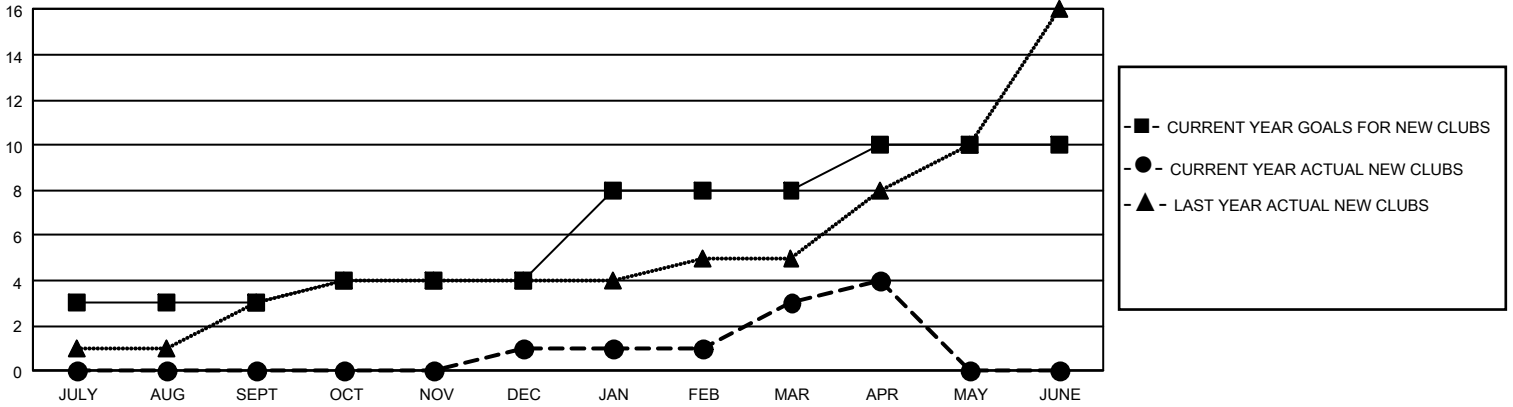
GMT Constitutional Area 3, Group J

REPORT DOES NOT INCLUDE CLUBS IN UNDISTRICTED AREAS.

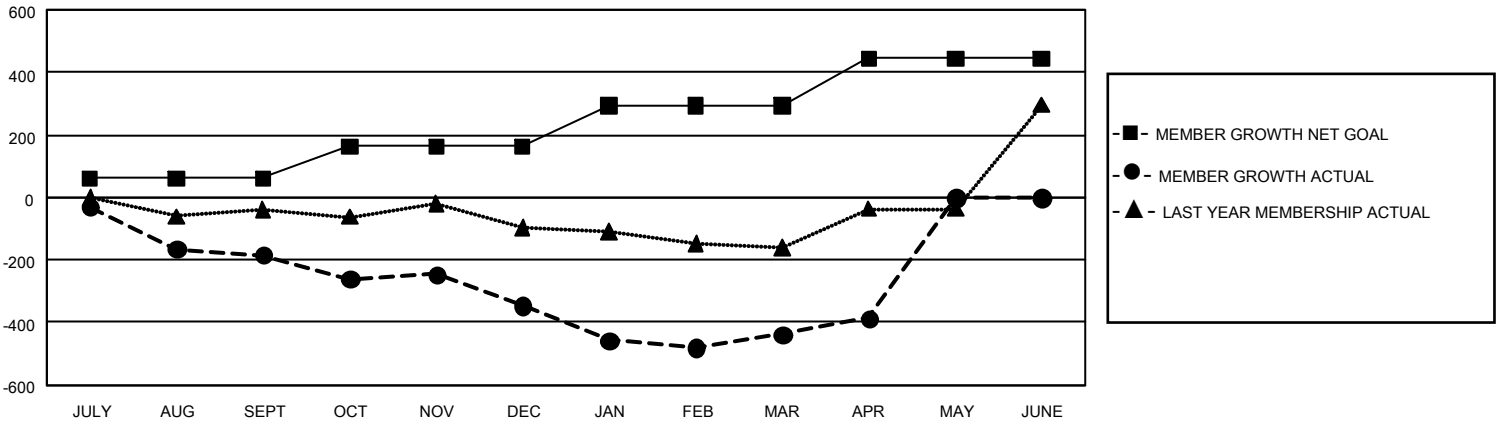
Clubs			
RESULTS FOR 2022-2023			
QUARTER	NEW CLUB GOAL	NEW CLUBS	DROPPED CLUBS
JULY/AUG/SEPT	9	0	3
OCT/NOV/DEC	3	1	2
JAN/FEB/MAR	12	2	4
APR/MAY/JUNE	6	1	0

Members			
RESULTS FOR 2022-2023			
QUARTER	MEMBER GROWTH NET GOAL	MEMBER GROWTH ACTUAL	DROPPED MEMBERS ACTUAL (including transfers)
JULY/AUG/SEPT	60	104	271
OCT/NOV/DEC	103	230	324
JAN/FEB/MAR	130	164	249
APR/MAY/JUNE	151	107	50

GOALS AND ACTUAL NEW CLUBS CUMULATIVE



GOALS AND ACTUAL MEMBERS CUMULATIVE



DROPPED CLUBS: 9 DROPPED MEMBERS DECEASED 32 CLUB CANCELLED 199 OTHER 663 TOTAL 894	95 CLUBS OF 210 ADDED 1 OR MORE NEW MEMBERS	GENDER DISTRIBUTION MALE 2,904 (55.23%) FEMALE 2,352 (44.73%) NON BINARY 1 (0.02%) PREFER NOT TO ANSWER 1 (0.02%)
	CLICK HERE FOR CUMULATIVE MEMBERSHIP DATA	TOTAL FAMILY UNIT MEMBERS 2,236 FAMILY MEMBERS PAYING HALF DUES 1,184